



INSTALLATION GUIDE

PART NUMBER: 51027
REAR ANTI-SWAY BAR
FORD MUSTANG | 2005-2014

300 W. PONTIAC WAY CLOVIS, CA 93612
PHONE: 800-445-3767 | EMAIL: INFO@STSUSPENSIONS.COM

THANK YOU

Thank you for choosing our high quality ST Suspensions product. We have spent a great deal of time developing our line of products so that you will receive maximum performance with minimal difficulty during installation. Soon your vehicle will be on the road looking and feeling much improved.

Please take a moment to read all instructions and warnings prior to the installation of your new ST Suspensions product and before operating your vehicle. For any questions or concerns regarding the steps in the installation process, please do not hesitate to call or email our customer support team who are trained to help you through any portion of this process.

Before You Begin:

It is of the utmost importance that you confirm all of the components listed on the parts list is in the kit. You can find this list located on the last page(s) of your instructions. Do not begin installation if any part is missing. Instead, please call our customer service specialists.

Customer Support:

Phone: 1-800-445-3767

Email: info@stsuspensions.com

Safety Information:

Warning: Do not work under a vehicle supported only by a jack. Place support stands securely under the vehicle in the manufacturer's specified locations unless otherwise instructed.

Proper use of safety equipment and eye/face/hand protection is absolutely necessary when performing any of the following instructions.

We strive for an exceptional experience for all our valued customers. If for any reason you need assistance with your ST Suspensions products, please do not return the product to the store you purchased from, but rather call our dedicated customer service experts, from 7am to 5pm PST.

We recommend that a qualified mechanic, at a properly equipped facility, perform this installation.

It is very helpful to have an assistant available during installation.

Before Driving Your Vehicle:

It is important to double check all brake hoses, cables, and other components to be sure there is no interference. You must also check for wheel/tire to chassis/body interference. If any issues are found, review your installation instructions to be sure no steps were missed and any problems are corrected.

Make sure your vehicle is aligned immediately following installation.

Check all hardware and re-torque at intervals for the first 10, 100, and 1000 miles.

Any changes in your vehicle's suspension may result in transformed handling. Please test-drive your vehicle in a remote location so you can become accustomed to the revised driving characteristics.

Perform headlight check and adjustment.

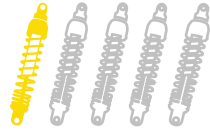
Failure to drive any modified vehicle in a safe manner may result in harm or death.

Never operate your modified vehicle under the influence of drugs, alcohol, or lack of adequate sleep.

Always wear your seatbelt.



DIFFICULTY:



INSTALLATION TIME: 1 - 2 Hours

RECOMMENDED TOOLS:

- Properly rated floor jack
- Support stands
- Wheel chocks
- Metric and standard socket wrench set
- Metric and standard wrench set
- Safety glasses
- Torque wrench rated up to 100 ft lbs.

JACKING, SUPPORTING, AND PREPARING THE VEHICLE

1. Park your vehicle on a smooth, level, concrete, or seasoned asphalt surface.
2. Block the front wheels of the vehicle using wheel chocks. Make sure the vehicle's transmission is in "PARK" (automatic) or first gear (manual).
3. Activate the parking brake.
4. Lift the rear of the vehicle off the ground using a properly rated floor jack. Lift the vehicle so the rear tires are approximately 6-8 inches off the ground.
5. Place support stands rated for the vehicle's weight. The stands must be positioned in the factory specified locations. (Refer to the owner's manual). Prior to lowering the vehicle onto stands, make sure the support stands will contact the chassis. It is very important that the vehicle is properly supported to prevent any harm to oneself or to the vehicle.
6. Lower the vehicle slowly onto the stands.



Technician reminder:

Never work under a vehicle supported only by a jack. It is necessary to place support stands securely under the vehicle in the manufacturer's specified locations unless otherwise instructed.

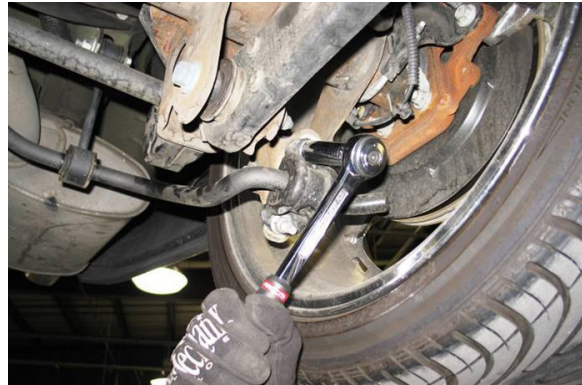
ORIGINAL SWAY BAR REMOVAL

VEHICLES WITH A FACTORY REAR SWAY BAR

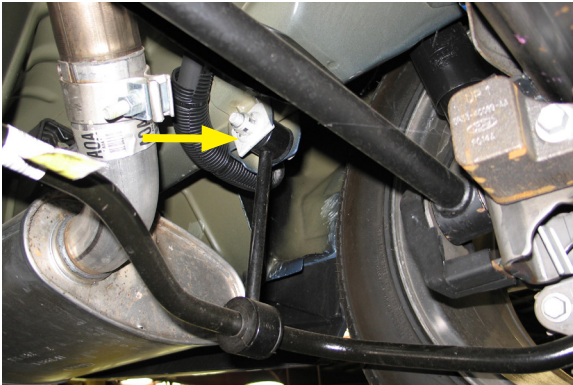
7. Locate the four mounting points that attach the original sway bar to the axle and the chassis.



8. Remove the four 15mm nuts from the bushing brackets at the ends of the original sway bar.



9. Remove the 18mm bolts from the upper end links. Leave the mounting nuts, which are secured by clips, attached to the chassis.



10. Detach the original equipment sway bar assembly from the vehicle.

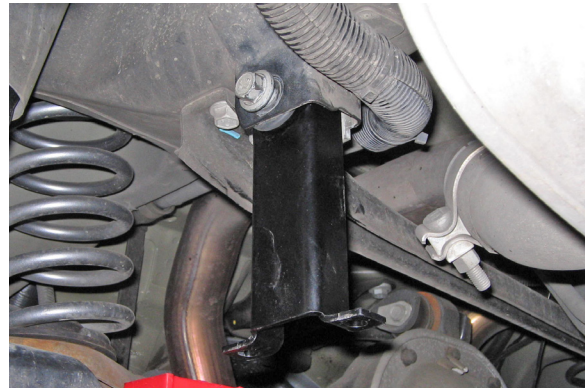
ST SWAY BAR INSTALLATION

11. Place the new ST end link into the vehicle chassis bracket, bushing side up. Use the original nuts and bolts to fasten the end link, do not torque yet.

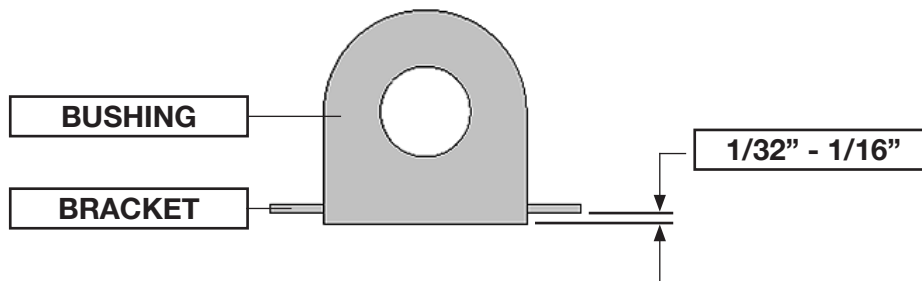


Technician note:

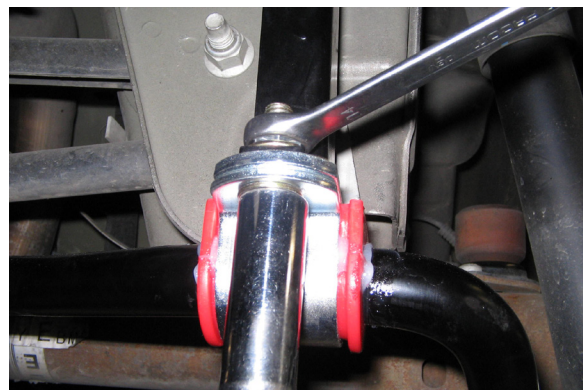
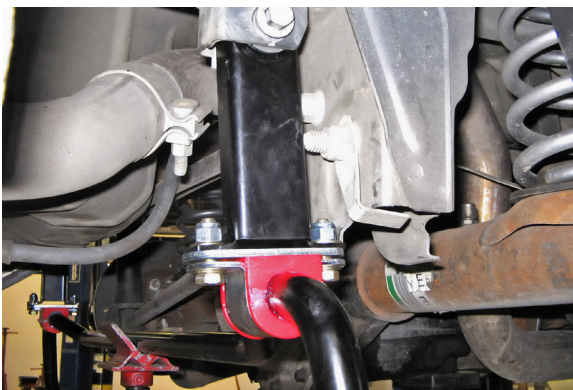
If the vehicle was not originally equipped with a sway bar, fasten the upper end link with the supplied 1/2"-13 x 3" bolts, 1/2" washers, and 1/2" Stover lock nuts in the V6 Hardware Pack. Place a washer between the head of the bolt and nut.



12. Thoroughly lubricate the inside of the supplied small pivot bushings using the grease packet included with the kit.
13. Place the small bushings on both sides of the ST sway bar, near the positions on the original sway bar. Once located, rotate the bushings slightly to evenly spread the lubricant. Place the small bushing brackets over the bushings.
14. Ensure there is 1/32" to 1/16" of the bushing is showing after the bracket is seated. If the bushing is showing more than 1/16", use a sander or a sheet of coarse grit sandpaper to shave it down to the proper height.



15. To help with the installation, have an assistant hold the sway bar in position. If one is not available, then use a small adjustable jack stand to hold the sway bar in position while it is fastened.
16. Position the sway bar up to the end links. Attach the small pivot bushing brackets to the end links with the supplied 3/8"-16 x 1-1/4" bolts, 3/8" washers, and 3/8" Nyloc nuts. Place a washer between the head of the bolt and nut. Do not torque yet.



Technician reminder:

The ST sway bar is designed to be installed with the bent center section facing down.

ST SWAY BAR INSTALLATION CONTINUED

17. Thoroughly lubricate the inside of the supplied large pivot bushings using the grease packet included with the kit.
18. Place the large bushings on both ends of the ST sway bar, near the positions on the original sway bar. Once located, rotate the bushings slightly to evenly spread the lubricant. Place the large bushing brackets over the bushings.
19. Swing the sway bar forward to position the ends to the bar up to the lower shock mounts.
20. Attach the large pivot bushing brackets to the lower shock mount brackets with the original nuts and bolts. Do not torque yet.



Technician note:

If the vehicle was not originally equipped with a sway bar, fasten the ends of the sway bar with the supplied 3/8"-16 x 1" bolts, 3/8" washers, and 3/8" Stover lock nuts in the V6 Hardware Pack. Place a washer between the head of the bolt and nut.



21. Before tightening the remaining hardware, ensure the sway bar is centered from side to side between all four bushings. Torque all four bushing bracket bolts to 52 ft lbs. Torque the upper end link bracket bolts to 85 ft lbs.

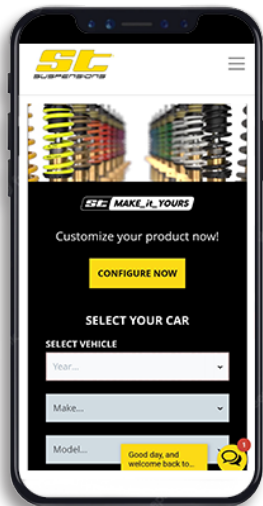


FINALIZING THE INSTALLATION

22. Lift the vehicle and remove the support stands.
23. Carefully lower the vehicle onto flat ground.
24. Check that all components and fasteners have been properly installed and torqued.
25. Read and perform all tasks in the “Before Driving Your Vehicle” section of page 1 of your instructions.

THANK YOU FOR CHOOSING ST SUSPENSIONS.

You are now a part of the ST suspensions family and we are eager to catch a glimpse of your newly modified vehicle. Give us a shout out and let us know how much you love our product. Don't forget, we offer other ST suspensions related merchandise for you and your vehicle on our website www.stsuspensions.com



STsuspensionsUSA



KW automotive



@st_suspensions

If you have any questions, concerns, or warranty related issues regarding your ST suspensions product, please call or email our experienced customer service specialists.

Customer Support:

Phone: 1-800-445-3767

Email: info@stsuspensions.com

KIT CONTENTS



SWAY BAR KIT		
Part number	Description	Qty
51027-300	1" REAR ANTI-SWAY BAR	1
51027-777	HARDWARE KIT	1
51027V6-777	V6 HARDWARE KIT	1

V6 HARDWARE KIT (51027V6-777)		
Part number	Description	Qty
112318	3/8"-16 STOVER LOCK NUT	4
110401	1/2"-13 STOVER LOCK NUT	2
110625	3/8" WASHER	8
112538	1/2" WASHER	4
112086	3/8"-16 X 1" BOLT	4
112208	1/2"-13 X 3" BOLT	2

HARDWARE KIT (51027-777)		
Part number	Description	Qty
110255	3/8"-16 NYLOC NUT	4
110625	3/8" WASHER	8
112094	3/8"-16 X 1-1/4" BOLT	4
51027-050	END LINK BRACKET	2
113165	1" PIVOT BUSHING	2
113075	1" PIVOT BUSHING	2
114020-95	PIVOT BUSHING BRACKET	2
114026-95	PIVOT BUSHING BRACKET	2
55000-10	WHITE LITHIUM GREASE	1



KW automotive North America, Inc.

300 W. Pontiac Way

Clovis, CA 93612

Phone: +1-559-875-0222

Toll Free: 1-800-445-3767

stsuspensions.com